



UNDERWATER LIGHTS SL-33 SERIES



TYPE

SPECIFICATIONS

CONSTRUCTION: Cast brass body and cap; Brass nickel-plated liquid tight straight bushing
-AB models feature cast brass aiming bracket with large black thumb screws

LENS: High impact clear tempered flat glass

LAMP SUPPLIED: 20 watt MR16 ULTRA FL(BAB); 10,000 hours average rating (50 watt max.)

LAMP OPTIONS: We recommend 35 watt MR16 TITAN 18,000 hours average rating or 4w ARROW LED 50,000 average rating

SOCKET: High temperature ceramic GU5.3 bi-pin with 250°C silicone lead wires

WIRING: 15 feet 18/2 SJTOW cord (available up to 50 feet)

MOUNTING: Surface mount aiming bracket on -AB models only

FINISH: Unfinished brass

optional finishes: Black Acid Treatment (-BAT) & Brass Acid Rust (-BAR)



SL-33-AB-LED



SL-33-ULT

ORDERING INFORMATION

CATALOG NO.	DESCRIPTION	LAMP SUPPLIED	SHIP WEIGHT
SL-33-ULT	Cast Brass Underwater Light	20w Ultra FL(BAB)	3.0 lbs.
SL-33-AB-ULT	Cast Brass Underwater Light, Aim Bracket	20w Ultra FL(BAB)	5.0 lbs.
SL-33-AC-ULT	Cast Brass Underwater Light, Angle Cap	20w Ultra FL(BAB)	4.0 lbs.
SL-33-ABAC-ULT	Cast Brass Underwater Light, Aim Bracket, Angle Cap	20w Ultra FL(BAB)	5.0 lbs.

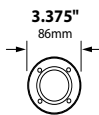
-SM Add to catalog number for side mount cord entry



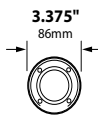
SL-33-ACULT-BAT



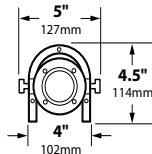
SL-33-SMAC-ULT



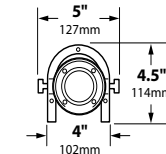
SL-33



SL-33-AC



SL-33-AB

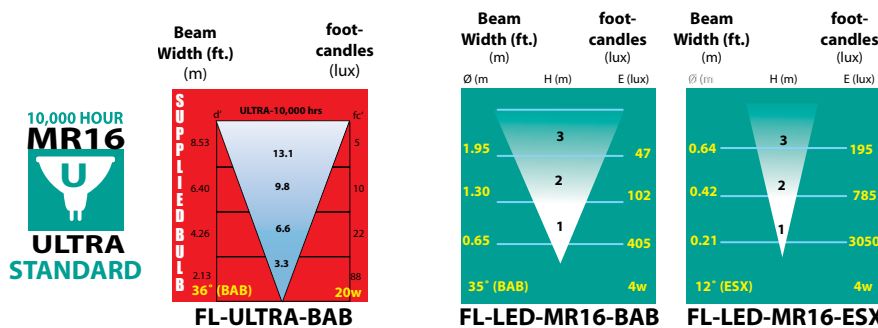


SL-33-ABAC



SL-33-ABACULT-BAR

LIGHT DISTRIBUTIONS AND PHOTOMETRICS



ACCESSORIES

FA-11-SL-33-BLUE	Blue Tempered Glass Lens
FA-11-SL-33-GREEN	Green Tempered Glass Lens
FA-11-SL-33-RED	Red Tempered Glass Lens
FA-11-SL-33-AMBER	Amber Tempered Glass Lens
FA-11-SL-33-WL	White Flashed Opal Tempered Glass Lens
FA-154	Brass Adjustable Aiming Bracket
FA-155-CST	Cast Brass Angle Collar

ADDITIONAL SJTOW CORD Sold in 5 foot lengths, not to exceed total of 50 feet. Add total number of feet to catalog number.

FSA-00

Powder Coat Finishes	Black Texture (Standard)	Antique Verde	Bronze Texture	Camel	White Texture	Hunter Texture	Rust	Weathered Iron	Weathered Brown	Stucco	Rubbed Verde	Chrome Powder	Terra Cotta
Ordering Code	-BLT	-ATV	-BRT	-CAM	-WTX	-HTX	-RST	-WIR	-WBR	-STU	-RBV	-CPR	-TRC

UL 676

IP68

CE

ETL LISTED US

JOB INFORMATION

Type: _____ Date: _____

Job Name: _____

Cat. No.: _____

Lamp(s): _____

Specifier: _____

Contractor: _____

Notes: _____

FOCUS INDUSTRIES INC.
25301 COMMERCENTRE DRIVE
LAKE FOREST, CA 92630

www.focusindustries.com
sales@focusindustries.com
(949) 830-1350 • FAX (949) 830-3390